

SPECTRA X-XL

Original Operating Instructions



Read the operating instructions and the chapter on safety information before operating the machine. Keep the operating instructions near the machine.



Dear customer,

Congratulations on your purchase of a Spectra coffee machine.
Thank you for your confidence in us.

The Spectra is a powerful and space-saving coffee machine. It adapts to your needs perfectly. Your customers will be impressed.

We hope you enjoy your coffee machine and that it will bring you consistently happy customers.

Sincerely, FRANKE Kaffeemaschinen AG

Table of contents

EXPLANATION OF SYMBOLS	3	CLEANING, RINSING AND SERVICING	23
FOR YOUR SAFETY	4	OVERVIEW OF THE SEPARATE CLEANING INSTRUCTIONS	23
PROPER USE	4	MAINTENANCE PLAN	23
GENERAL RISKS	5	REPLACING THE DETERGENT CANISTER	24
SCOPE OF DELIVERY AND IDENTIFICATION	7	CONFIGURING	25
SCOPE OF DELIVERY	7	CONTROLS	25
IDENTIFICATION	8	SHUT-DOWN AND DISPOSAL	31
DESCRIPTION OF MACHINE	9	SHUT-DOWN	31
CAPACITIES AND OPERATOR PANELS	9	SHUT-DOWN FOR LONGER PERIODS AND STORAGE	31
SPECTRA X-XL AND ADD-ON UNIT	10	DISPOSAL	31
DISPLAY AND PROGRAMMING KEYPAD	11	TROUBLESHOOTING	32
INSTALLATION AND TECHNICAL DATA	12	HELP WITH MACHINE ERRORS	32
INSTALLATION	12	CERTIFICATIONS	33
START-UP, FILLING AND EMPTYING	15	DECLARATION OF CONFORMITY	33
DAILY START-UP	15		
ADD GROUND COFFEE	16		
EMPTY STORAGE CONTAINER	16		
COFFEE GROUNDS EJECTOR (OPTIONAL)	17		
PREPARING DRINKS	18		
SELECT BREWING SETTING	18		
INSERT/REMOVE OUTLET	19		
PREPARING DRINKS WITH THE BASIC CONTROL PANEL	20		
PREPARING DRINKS WITH THE VETRO CONTROL PANEL (VARIATION)	21		
DISPENSING HOT WATER	22		

Explanation of symbols



DANGER indicates potentially life-threatening danger or grave injury.



WARNING indicates risk of injury.



CAUTION indicates risk of minor injury.

NOTICE

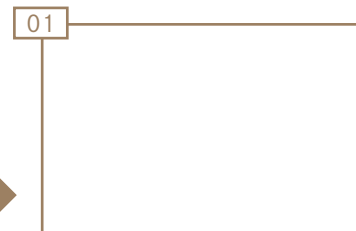
NOTICE indicates possibility of damage to the machine.



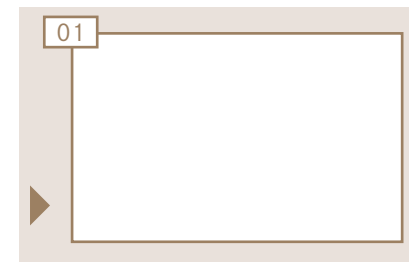
"Cleaning" the add-on unit or individual components.



This symbol indicates tips, shortcuts and additional information.



Describes in text and pictures a step that you must perform.



Steps on a background are optional. They must be performed depending on the model of your machine.



Each operator must have read and understood the instructions.



Wear the protective goggles whenever this symbol appears.



Wear the protective gloves whenever this symbol appears.

For your safety

Both you and the coffee machine are important to us. Therefore, we would like to provide you with detailed safety information. For us, a high degree of safety goes without saying. Protect yourself against remaining risks from use of the machine.

Proper use

Spectra X-XL

The Spectra X-XL is a coffee machine for use in food service, offices and similar environments. It is designed to process ground coffee into brewed coffee.

Your coffee machine is designed exclusively for preparing coffee drinks and hot water in accordance with these instructions and the technical data.

Cup warmer (optional)

The cup warmer is an optional accessory for the coffee machine. It is intended only for warming coffee cups and glasses used when preparing drinks.

The cup warmer is not designed to dry dish towels or other cloths. It is not necessary to cover the cups to warm them.

Important

- Do not operate the coffee machine or add-on units until you have completely read and understood these instructions.
- Keep these instructions near your coffee machine.
- Your coffee machine is intended for use by trained personnel. Each operator of the coffee machine must have read and understood these instructions. This does not apply to self-service customers. Self-service machines must always be monitored to protect the users.
- Children or physically or mentally challenged persons must never approach the machine alone and must always be supervised.

- Have the safety features checked regularly by our Service. Have the machine serviced at regular intervals. Regular maintenance will ensure the safe operation and high performance of your coffee machine.
- If the machines are sold or transferred to a third party, give the operating instructions to the next user.
- The configuration of your coffee machine may differ from that shown in the instructions. Please refer to your purchase agreement.
- Additional accessories may be obtained directly from your retailer or from FRANKE Kaffeemaschinen AG in Aarburg, Switzerland.



If you need more information or if specific problems occur that cannot be resolved using these instructions, contact your local customer service representative for the required information or contact FRANKE Kaffeemaschinen AG in Aarburg, Switzerland, directly.

General risks

DANGER

Risk of death by electrocution!

- Never operate a machine that has been damaged or has a damaged power supply cable.
- If you suspect damage to the machine (for instance, a hot or burning odor), immediately unplug the machine from the outlet and contact your service technician.

If the power supply cable to this machine is damaged, it must be replaced by a special power cord.

- Only a qualified service technician should replace the power supply cable.
- Ensure that the machine and power supply cable are not near any hot surfaces such as gas or electric stoves or ovens.
- Ensure that the power supply cable is not pinched and does not rub against sharp edges. The machine contains electrically conductive parts. Opening the machines can pose risk of death.
- Never open or attempt to repair the machine yourself.
- Do not make any modifications to the machine that are not described in the operating instructions.
- Repairs should only be made by a service technician using original replacement and accessory parts.

WARNING

Risk of injury!

Reaching into the machine may result in abrasions or crushing injuries from interior components.

- Only service personnel should open the machine!
- Repairs may be performed only by Franke Service Technicians.

WARNING

Risk of injury, eye injury and damage to the machine!

Objects in the ground coffee container may splinter and be ejected, leading to damage to the machine or injury.

- Never put anything into the ground coffee container!
- Never poke any object around in the ground coffee container!

WARNING

Risk of acid burns caused by detergent.

The undiluted detergent has an acidic-effect when it comes into contact with skin or clothing.

- Make sure to wear your personal protective equipment.
- Wear protective gloves and protective goggles.
- Make sure that you are particularly focused when replacing on the canister.
- If the detergent gets on your skin or in your eyes, rinse with a lot of water and consult your physician.

WARNING

Risk of burns!

The coffee and milk dispensers and the hot water nozzle are hot.

- Do not touch the outlets or nozzles.

The surfaces of the cup warmer are hot.

- Do not touch these surfaces.

⚠ WARNING

Risk of scalding!

Due to missing outlet.

- Always use the machine with the correctly installed outlet.

During cleaning, hot water and steam are released repeatedly.

- Always use the cleaning pipe.
- Keep hands away from the outlets and nozzles during cleaning!

When drinks are dispensed, the products themselves pose a risk of scalding.

- Always be careful with hot drinks!

⚠ CAUTION

Risk of spoiled food residue!

If the machine is not cleaned regularly, coffee residue may accumulate in the machine, clog the outlets or find its way into drinks.

- Clean the coffee machine and add-on units at least once a day.
- Read the chapter "Cleaning, Rinsing and Servicing"!

⚠ CAUTION

Risk of contamination!

When the machine is not in use for extended periods, residue may accumulate.

- Clean the coffee machine and add-on units before initial use and when not in use for extended periods (more than 2 days)

NOTICE

Damage from unsuitable raw materials!

The coffee machine is not suitable for the processing of instant coffee, aromatized coffees or whole beans.

- Use only ground coffee.

NOTICE

Damage from water jets!

The coffee machine is not protected from water jets.

- Do not use water jets or high-pressure cleaners to clean the machine.
- Read the chapter "Cleaning, Rinsing and Servicing"!

NOTICE

Damage to the machine!

- Set the machine up out of the reach of children.
- Do not expose the machine to the elements, such as rain, frost or direct sunlight.
- The ambient temperature may not fall below the freezing point.

The power supply cable can pose a risk of tripping or be damaged.

- Never let the power supply cable hang loose.

Scope of delivery and identification

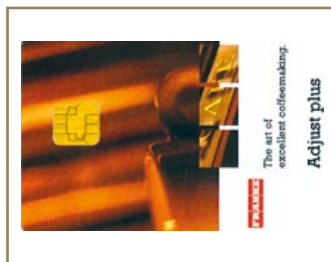
Your coffee machine is master of many services. With the wide range of options you can stay on top of any situation. Listed below are ways to identify your device and what is included in the standard delivery.

Scope of delivery



Spectra X-XL

Basic model.



Adjust Plus Card

To program the machine and back up data.

Item no.: 1H 325 161



Microfiber cloth

To clean and protect the exterior of the machine.

Item no.: 1H 325 974



Insert cleaning protect.

Item no.: 1H 328 158



Operating Instructions

Manual Set

Item no.: 1H 328 132



The configuration of your coffee machine may differ from that shown in the instructions. Please refer to your purchase agreement. Additional accessories may be obtained directly from your retailer or from FRANKE Kaffeemaschinen AG in Aarburg, Switzerland.

Identification

Spectra X-XL type plate (example)

FRANKE COFFEE SYSTEMS Franke Kaffeemaschinen AG Franke-Strasse 9 CH - 4663 Aarburg Switzerland		1
Name: Spectra X-XL (Commercial Coffee Machine) Serial-No.: 00016241 Install-No.: 464807 ID-No.: 041.000.001 Type: X-XL V8 1P H		2
Voltage: 400V 3L N PE Frequency: 50 / 60 Hz Power: 9200 W Fuse Protection: 16 A Max. Inlet pressure: 0.8 MPa (8bar)		3
Boiler: Coffee Water Water capacity: 6l - Operating pressure: 0.3MPa (3bar) -		4
CE		5
CE		6

Cup warmer type plate (example for the add-on units)

FRANKE COFFEE SYSTEMS Franke Kaffeemaschinen AG Franke-Strasse 9 CH-4663 Aarburg Switzerland		1
Name: Cup Heater (to Commercial Coffee Machine) Serial-No.: 41.20002045 Install-No.: 401076 ID-No.: 40.000.001 Type: TW S Voltage: 220-240V Frequency: 50/60Hz Power: 300W		2
CE		3
CE		4
CE		5
CE		6

- 1 Manufacturer
- 2 Machine number
- 3 Identification code
- 4 Apparatus number
- 5 Model (for model codes, see below)
- 6 Technical data

Type plate position (inner side of the front)



Model code

Model code	Component
X -XL	Spectra X-XL (also included in the family are S, X and I)
B	Basic control panel (V: Vetro control panel)
1P	Ground coffee dosing unit
H	Hot water dispenser
TW	Cup warmer (optional)

Description of the machine

In this section you will learn more about the functions and options of your coffee machine and where the controls are located.

Capacities and operator panels

Introduction

The coffee machine has numerous options. To give you an overview of your machine, we will illustrate various options with a sample configuration.

Please note that your coffee machine may look different from the configuration shown here.

Capacities

Specialty	Hourly capacity
Coffee	400 cups/h
Hot water	150 glasses/h

Control units (The representations and key assignments can be selected by the user)



Basic

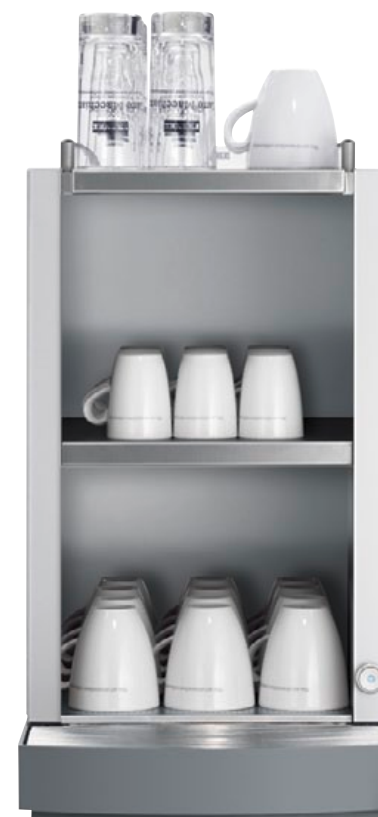
The basic control element. It is offered as the standard option. You can call up as many as 36 products quickly and easily.



Vetro 8 (Variante)

The Vetro 8 control panel is specially designed for self-service. It can show a maximum of 14 products.

Spectra X-XL and add-on unit



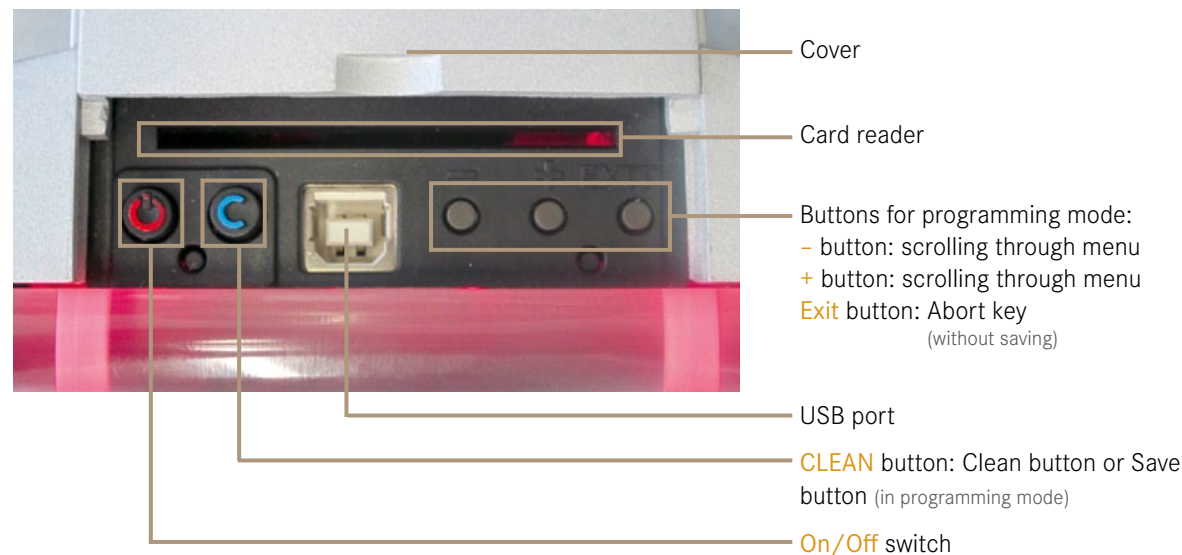
Cup warmer (optional)
To enjoy coffee at its best, you need pre-heated cups. The cup warmer fits perfectly next to your Spectra X-XL.

On/Off switch

Display and programming keypad

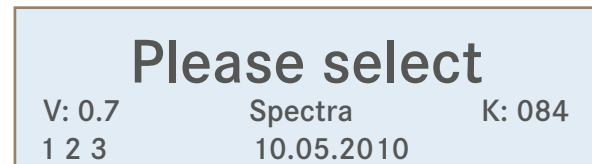
Programming keypad

You can use the programming keypad to switch your Spectra X-XL on and off or start a cleaning or rinsing cycle, and you can individually program your coffee machine with the Adjust Plus Card. The card reader enables you to save programmed settings on the Adjust Plus Card.



Default display

The display shows important status information and the next actions to be taken or options available.



Store display in liters
Readiness of coffee machine
Temperature of coffee boiler in °C

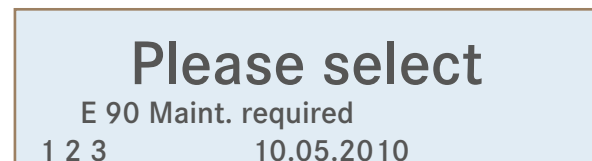
Date

Status displays:

- 1: Coffee boiler heating switched on
- 2: Brewing container heating switched on
- 3: Store heating switched on

Display with system or error messages

The second line of the display shows system or error messages, alternating with other information.



System or error message

Installation and technical data

Your Spectra X-XL must be properly installed so that you can operate it correctly—one of our service technicians will do that for you. You'll have to take care of a few things first. You'll find the preparations for problem-free enjoyment of your coffee machine here.

Installation

Preparations

- The power connection for the coffee machine must be protected by a ground fault circuit interrupter (GFCI).
- Each terminal of the power supply must be able to be interrupted by a switch.
- The water connections must have a water shut-off with a check valve and filter and must meet the requirements of the technical data.
- The water for coffee preparation must be fresh, oxygenated and rich in minerals.
- If your coffee machine has an electrical connection other than the one described in the table opposite, you will have received additional information regarding the installation with your order confirmation.

Installation

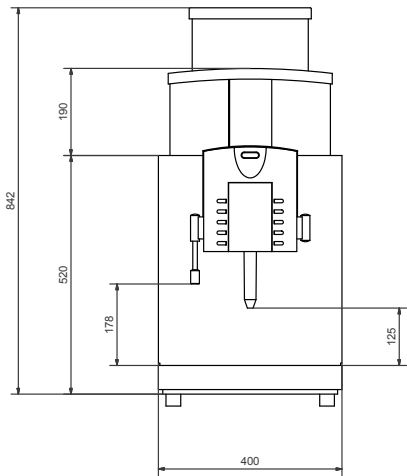
You must have completed these preparations before one of our service technicians can install the coffee machines for you. One of our service technicians will install your coffee machines and put them into operation for the first time. The technician will walk you through the basic functions.

Technical data for Spectra X-XL

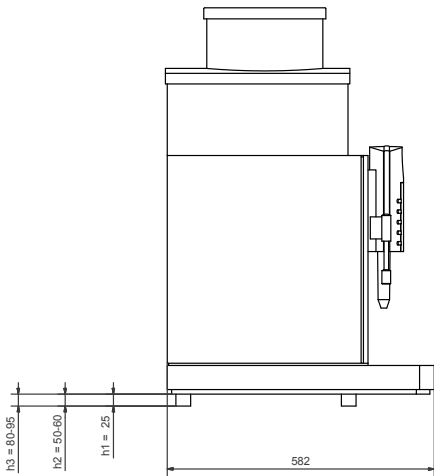
Electrical connections	400 V 3LN PE 9.3 kW Fuse: 16 A
	440 V 3L PE 10.2 kW Fuse: 16 A
	230V 3L PE 6.9 kW Fuse: 30 A
Electric cable	l = 1500 mm
Ground coffee dosing unit	3.0 kg (lockable)
Boiler volume	6 l
Boiler operating pressure	0.3 MPa (3.0 bar)
Noise emission	< 70 dB (A)
Weight	approx. 50 kg
Width	400 mm
Depth	582 mm
Height (with standard foot)	867 mm
Cold water connection	2 x G 3/4" outside thread l ₁ =1400mm, l ₂ =2000 mm (intake boiler and intake cleaning system)
Water pressure	80...800 kPa (0.8...8.0 bar)
Water shut-off	with check valve and filter
Water hardness	max. 70 mg CaO/l water (7 dH, 13 °fH)
Chlorine content	Max. 0.1 mg/l
Ideal pH value	7
Coffee grounds ejector drain	d = 40 mm
Drain pipe	d _{min} = 2"
Ambient conditions	Humidity: max. 80% Ambient temperature: 10 - 35 °C

Dimensions of the Spectra X-XL

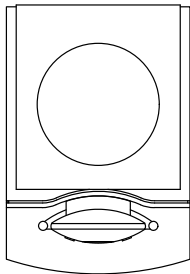
Front view



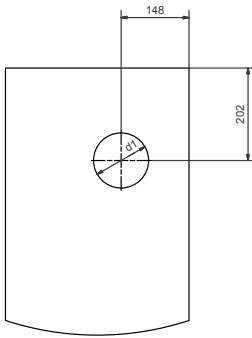
Side view



Top view



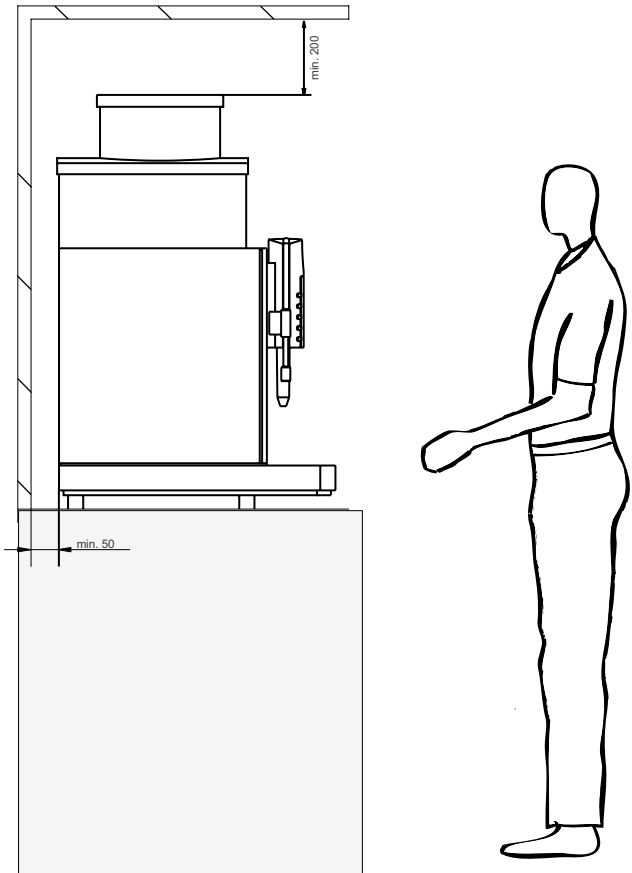
Cross-section from above (grommet hole)



Adjustable feet (optional)

40 mm (1 ½") foot	842 mm + 25 mm	= 867 mm
70 mm (2 ¾") foot	842 mm + (50 to 60) mm	= 892 to 902 mm
100-mm (4") foot	842 mm + (80 to 95) mm	= 922 to 937 mm

Installation dimensions of the Spectra X-XL



Prepare a stable, ergonomic surface (min. load capacity: 150 kg or 330.7 lb). The control unit should be at eye level.

Distance to the wall must be at least 50 mm. Clearance above the machine must be at least 200 mm.

Adjustable feet (optional) can be used to compensate for unevenness or height differences.

If optional add-on units are installed, up to an additional 300 mm may be required per add-on unit.

Observe the connection requirements of the add-on units.

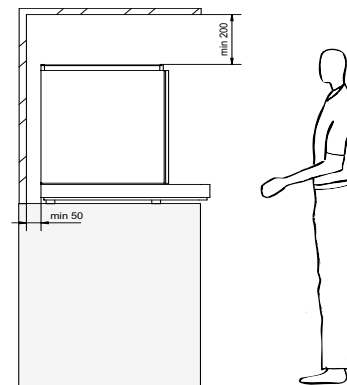
Technical data for the cup warmer

Capacity	up to 120 cups (depending on cup size)
Electrical connection	200 - 240 V 1LNPE 300W 50/60 Hz Fuse: 10 A
Electric cable	2000 mm
Weight	17 kg
Width	300 mm (11¾")
Depth	580 mm
Height	545 mm

Adjustable feet (optional)

40 mm (1 ½") foot	520 mm + 40 mm = 560 mm
70 mm (2 ¾") foot	520 mm + 70 mm = 590 mm
100-mm (4") foot	520 mm + 100 mm = 620 mm

Add-on unit installation dimensions



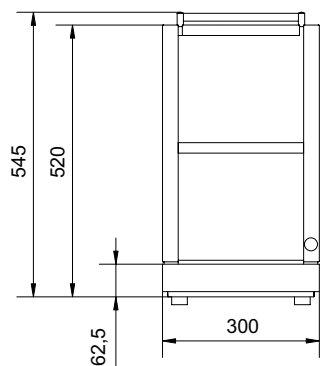
Distance to the wall must be at least 50 mm. Clearance above the machine must be at least 200 mm.

Adjustable feet (optional) can be used to compensate for unevenness or height differences.

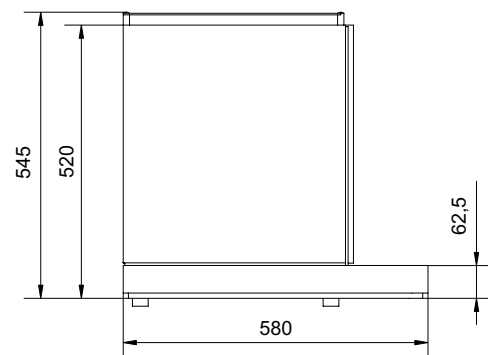
If optional add-on units are installed, up to an additional 300 mm may be required per add-on unit.

Dimension of cup warmer (as an example)

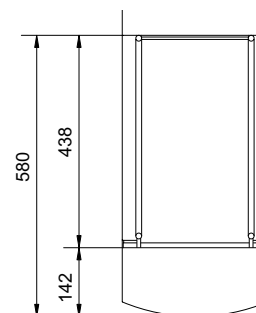
Front view



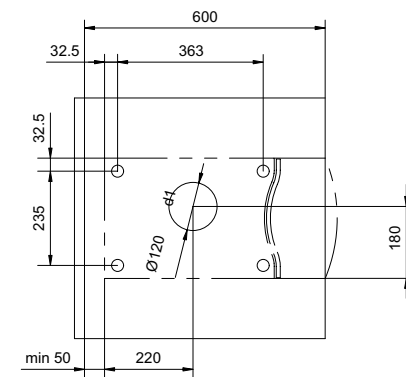
Side view



Top view



Grommet hole



Start-up, Filling and Emptying

In this chapter you will learn how to start up your Spectra X-XL coffee machine for the first time. In addition to the start-up procedure, you will learn about processes that take place automatically during start-up and about additional preparations. Get primed for a busy day!

Daily start-up

⚠ WARNING

Risk of scalding from hot water and splatters. Do not touch the outlets or the area under the outlets.

01



Switch on the machine with the On/Off button .

02



The machine automatically vents the boiler system while heating and rinses the coffee system automatically.

03



Add ground coffee.

NOTICE

The brewing setting must be selected in order for brewed coffee to be obtained.
The basic setting in the coffee machine defines 4 brewing settings. 0 to 4 liters of brewed coffee are pre-brewed and kept warm in the storage container.

04



Select brewing setting.

05



Machine prepares coffee. Coffee is kept warm in the storage container.

06



The LEDs for the drinks that can be selected light up. Machine is ready for operation.

Add ground coffee

WARNING

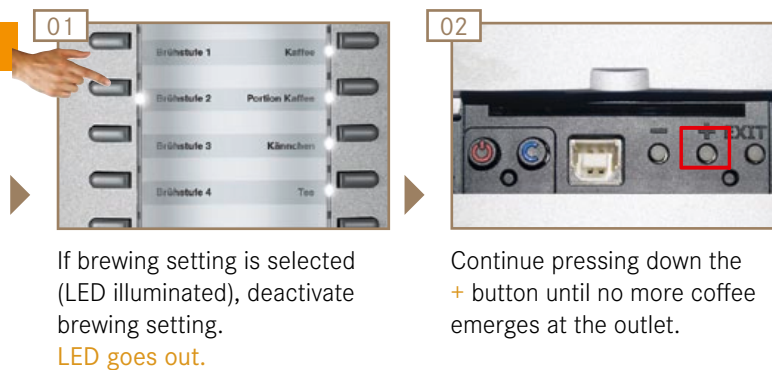
Risk of injury, eye injury and damage to the machine!
Objects in the ground coffee container may splinter and be ejected, leading to damage to the machine or injury.
Never put anything into the ground coffee container!
Never poke any object around in the ground coffee container!



Empty storage container

WARNING

Risk of scalding
from hot water and splatters.
Do not touch the outlets or the area under the outlets.



Coffee grounds ejector (optional)



The use of a coffee grounds ejector is required, depending on the region.

The coffee grounds ejector separates the coffee grounds from the rinse water and thus prevents blocked pipeline systems.

Use your coffee grounds ejector in accordance with its operating instructions. Clean the coffee grounds ejector at regular intervals.

Preparing drinks

You chose the Spectra X-XL because you love coffee and want to offer your customers something special. You will find information about preparing drinks and the variations possible for your specialty drinks here.

Select brewing setting

The brewing setting must be selected in order for coffee to be obtained. The brewing setting switches on when one of the brewing setting buttons is pressed. Off again by pressing once more. A different brewing setting can be selected at any time. Once started, a brewing cannot be interrupted.

If the level falls below the minimum supply amount, the machine will automatically after-brew at the active brewing setting.

Brewing setting	Brewing quantity	Minimum supply
1	1 liters	0.5 liter
2	2 liters	1 liters
3	3 liters	2 liters
4	4 liters continuously	



Insert/remove outlet



Outlet tube



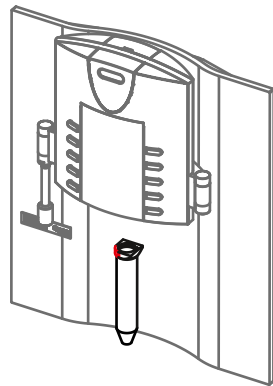
Special outlet for jug



Cleaning tube

CAUTION

Risk of scalding!
Due to missing outlet.
Use the machine only with the
correctly installed outlet.



The rounded-off corner on the
upper side of the outlet must
always be located on the front
left.



01
Turn the outlet tube clockwise
by approx. one quarter of a
rotation.
Remove outlet.



02
Select desired outlet and put it
in place
Rotate it counterclockwise
one quarter turn to fasten it in
place.

Preparing drinks with the Basic control panel

⚠ WARNING

Risk of scalding or burning!

The dispensers and drinks are hot.

Only touch the outlets on the insulated handles. Do not touch the area under the outlets.

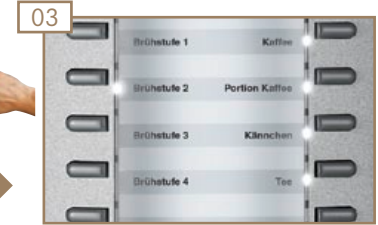
In case of scalding or burns, immediately cool the affected area and, depending on the severity of the injury, consult a doctor.



Place the appropriate cup or glass under the outlet.



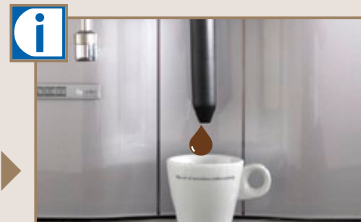
Select the desired product.
Preparation begins.



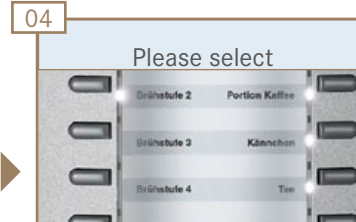
The LED for the selected drink starts to flash.



The drink can be redosed with the + button. Continue pressing the + button until the desired amount of coffee has flowed out.



Coffee is dispensed from the storage container.



The LEDs for the drinks that can be selected light up.
The drink is ready.

Preparing drinks with the Vetro control panel (variation)

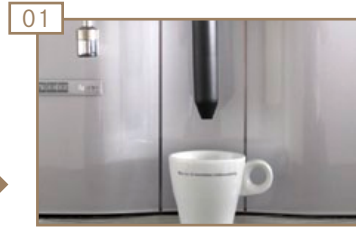
WARNING

Risk of scalding or burning!

The dispensers and drinks are hot.

Only touch the outlets on the insulated handles. Do not touch the area under the outlets.

In case of scalding or burns, immediately cool the affected area and, depending on the severity of the injury, consult a doctor.



Place the appropriate cup or glass under the outlet.



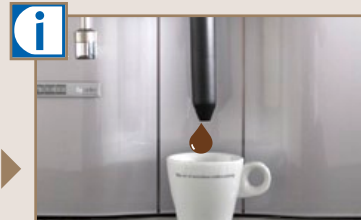
Select the desired product.
Preparation begins.



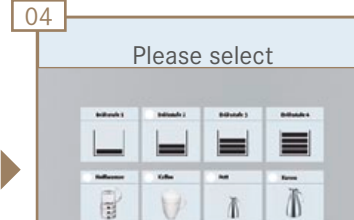
The LED for the selected drink starts to flash.



The drink can be redosed with the + button. Continue pressing the + button until the desired amount of coffee has flowed out.



Coffee is dispensed from the storage container.



The LEDs for the drinks that can be selected light up.
The drink is ready.

Hot water dispenser

⚠ WARNING

Risk of scalding or burning!
The dispensers and drinks are hot.

Do not touch the area under the outlets.
In case of scalding or burns, immediately cool the affected area
and, depending on the severity of the injury, consult a doctor.



Place the appropriate cup
or glass under the hot-water
outlet.



Select hot water.
Preparation begins.



The LED for the selected drink
starts to flash.



The LEDs for the drinks that
can be selected light up.
The drink is ready.

Cleaning, rinsing and servicing

Even a coffee machine like the Spectra X-XL must be cared for. To ensure high-quality flavor, the Spectra X-XL must be cleaned at least once daily and serviced at regular intervals.

Overview of the separate cleaning instructions

Spectra X-XL	
Cleaning instructions	1H 328 130

Maintenance plan

Frequency	Task	Information	Completed
Daily	Clean machine	See Cleaning Instructions	<input type="checkbox"/>
As per service contract	Maintenance by service technician Check the safety features	Contact a service technician.	<input type="checkbox"/>
As necessary	Clean outer surfaces with damp cloth		<input type="checkbox"/>

Replacing the detergent canister

⚠ WARNING

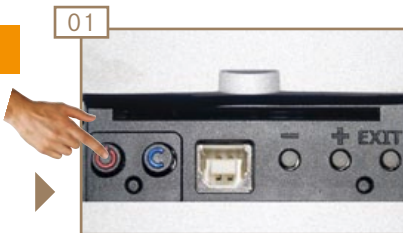
Risk of acid burns caused by detergent.

The undiluted detergent has an acidic-effect when it comes into contact with skin or clothing.

- Make sure to wear your personal protective equipment.
- Wear protective gloves and protective goggles.
- Make sure that you are particularly focused when replacing on the canister.
- Make sure the canister is on a safe stand.
- Leave the transport box around the canister.
- If the detergent gets on your skin or in your eyes, rinse with a lot water and consult your physician.



01



Switch coffee machine off.

02



Position a new canister with detergent next to the old canister.

03



Screw open the attachment piece for the suction tube with probe.

04



Open the lid of the new canister.

05



Guide the suction hose with probe into the new canister and screw the attachment piece shut.

⚠ WARNING

Risk of acid burns caused by detergent.

The undiluted detergent has an acidic-effect when it comes into contact with skin or clothing. Do not empty the remaining quantity in the old canister into the new canister.

06



Close the old canister securely with the lid.

07



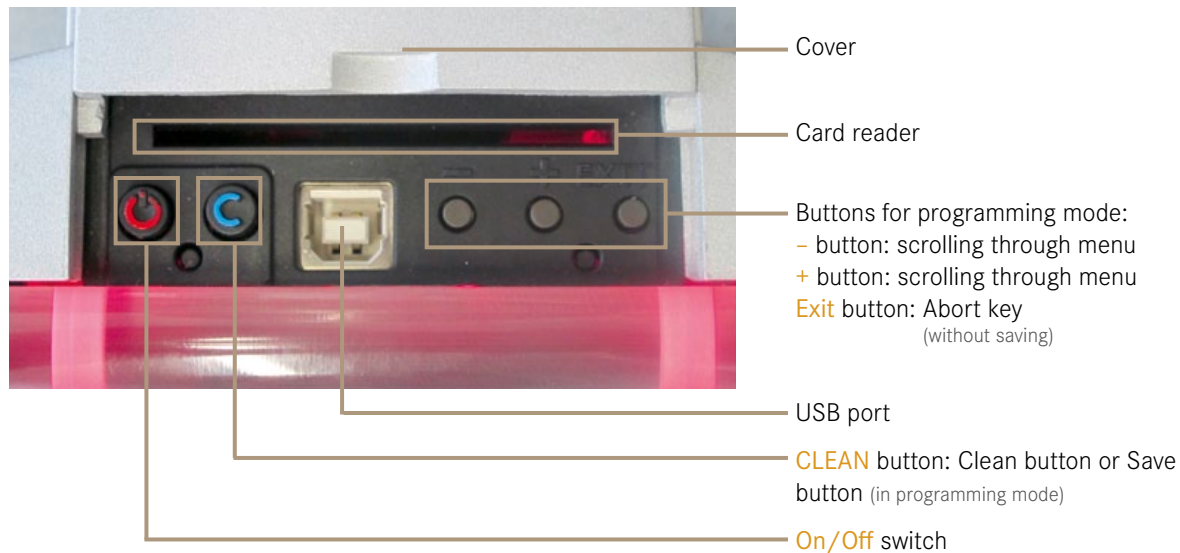
Dispose of old canister with any residues which may remain in accordance with local regulations.

Konfigurieren

Your Spectra X-XL is completely and individually programmable – so that the Spectra X-XL is just as flexible as you are. We have kept the programming simple to make your job easier. Try it for yourself.

Controls

Programming keypad



Adjust Plus Card



The Adjust Plus Card is used to:
operate the machine (restrict access) modify
parameters, store settings.

Navigating within the menu

Insert the Adjust Plus Card into the card reader.

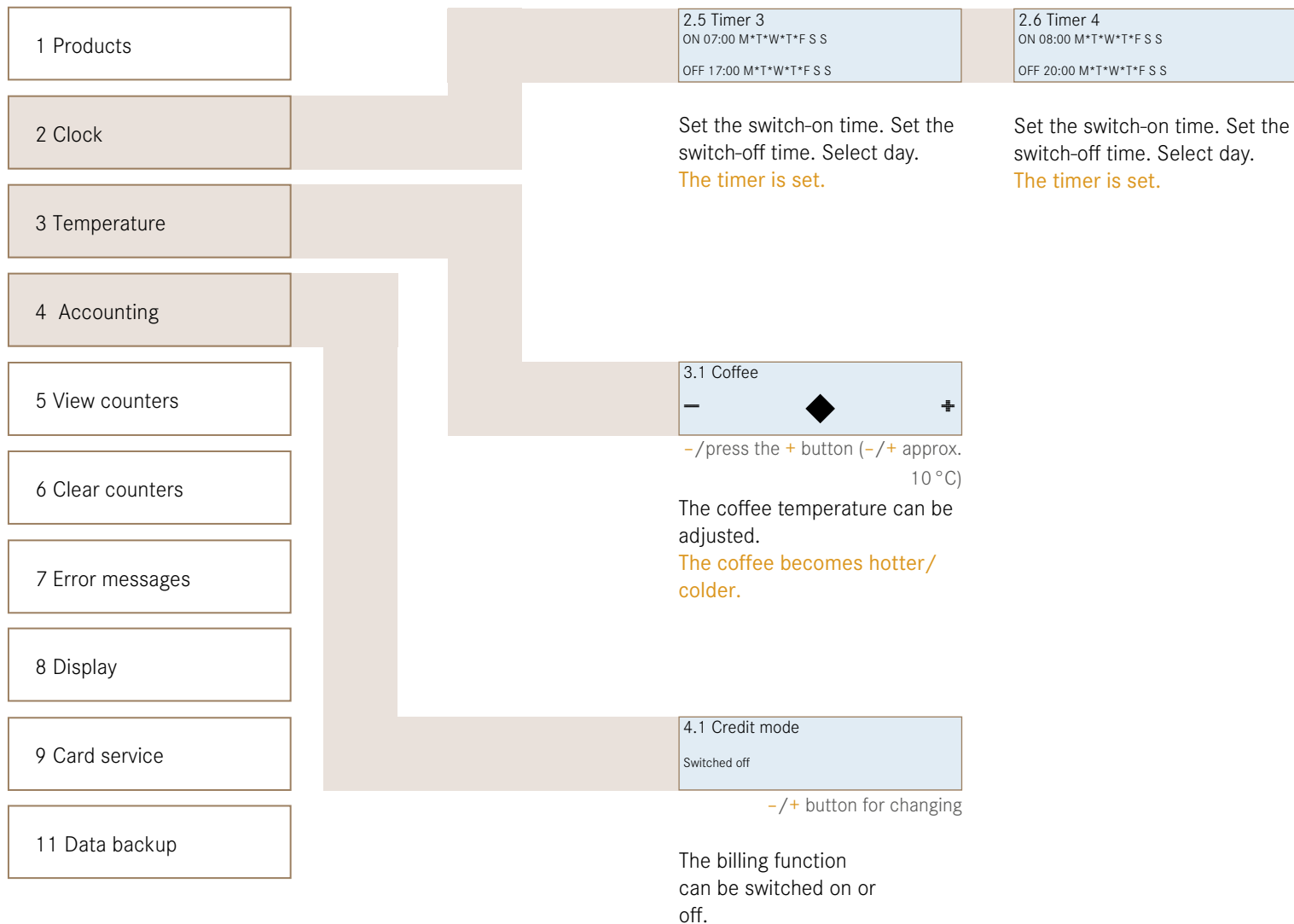
The menu appears.

You can navigate in the menu with +/-. Press
CLEAN to select an option, and press Exit
to quit an option without saving your selection..

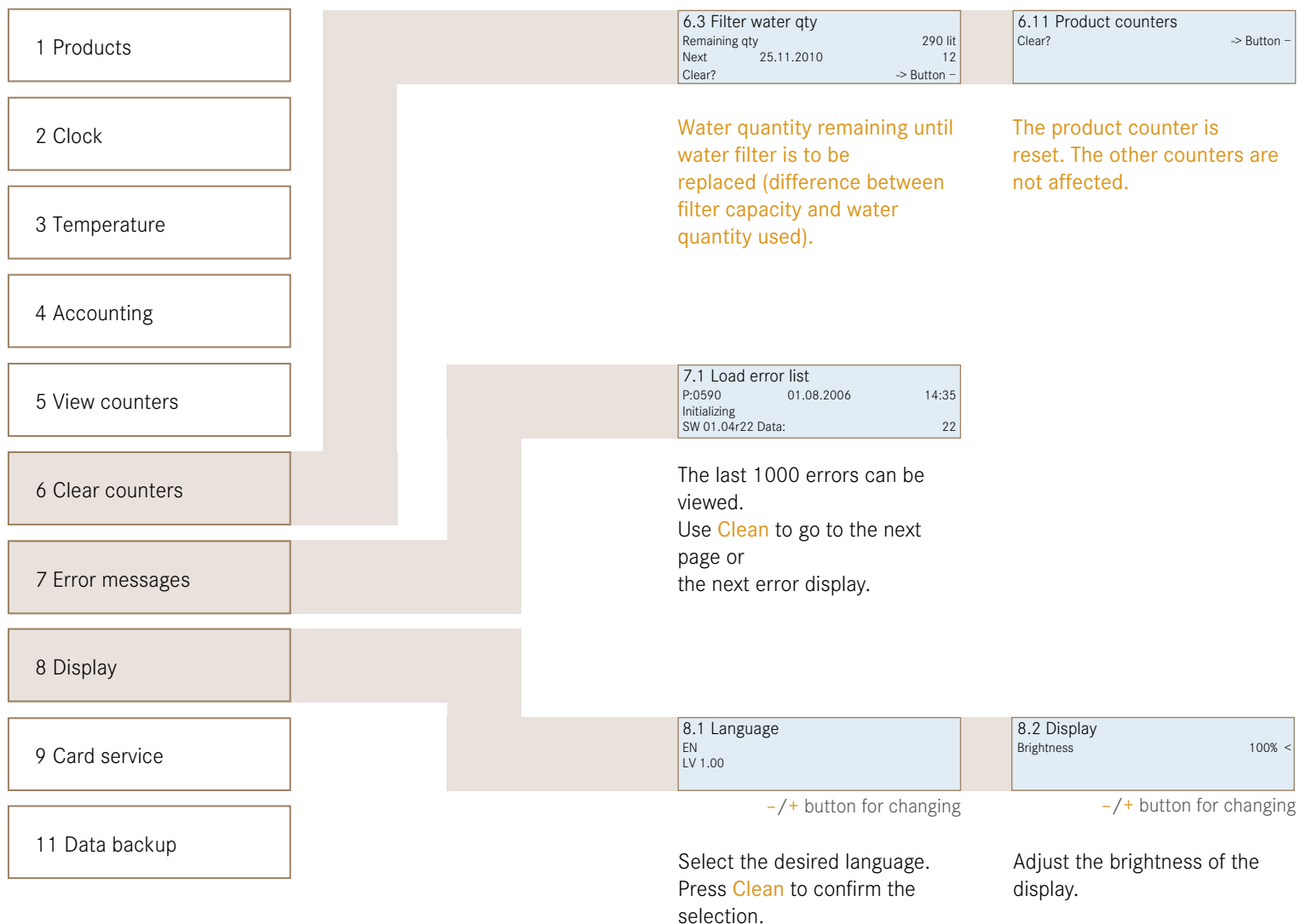


All programming menu items
are shown on the following
pages. Some of these menu
items may not be available on
your Spectra depending on the
configuration.

1 Products	<p>Modify your product settings. You can use various parameters to control and define the quality and quantity of the drinks you prepare.</p> <p>Before you can make settings you must select a product under 1.1 Product selection.</p>	<p>1 Products</p> <p>1.1 Select product</p> <p>Product buttons for making selection</p> <p>To select the product you want to change, press the button for the appropriate product. The selected product flashes.</p>	<p>1.11 Coffee quantity</p> <p>– ◆ +</p> <p>– / Press the + key (– / + approx. 100 ml)</p> <p>For setting the fill level of the coffee. The coffee is made stronger/weaker.</p>	<p>1.12 Hot water quantity</p> <p>– ◆ +</p> <p>– / Press the + key (– / + approx. 4 s)</p> <p>For changing the fill level of the hot water. More/less water is dispensed.</p>
2 Clock				
3 Temperature				
4 Accounting				
5 View counters		<p>1.24 Price</p> <p>– ◆ +</p> <p>– / + modify value</p> <p>For accounting systems: store the desired price.</p>		
6 Clear counters				
7 Error messages				
8 Display				
9 Card service		<p>2.2 Date/Time</p> <p>Display 24 hrs</p> <p>d 02 m 01 y 2010 h 14 m 37</p> <p>You can set the date and time. Use Clean to navigate in the menu and use the – / + button to change the values.</p>	<p>2.3 Timer 1</p> <p>ON 05:30 M*T*W*T*F S S</p> <p>OFF 16:00 M*T*W*T*F S S</p> <p>Set the switch-on time. Set the switch-off time. Select day. The timer is set.</p>	<p>2.4 Timer 2</p> <p>ON 06:00 M*T*W*T*F S S</p> <p>OFF 16:45 M*T*W*T*F S S</p> <p>Set the switch-on time. Set the switch-off time. Select day. The timer is set.</p>
11 Data backup				









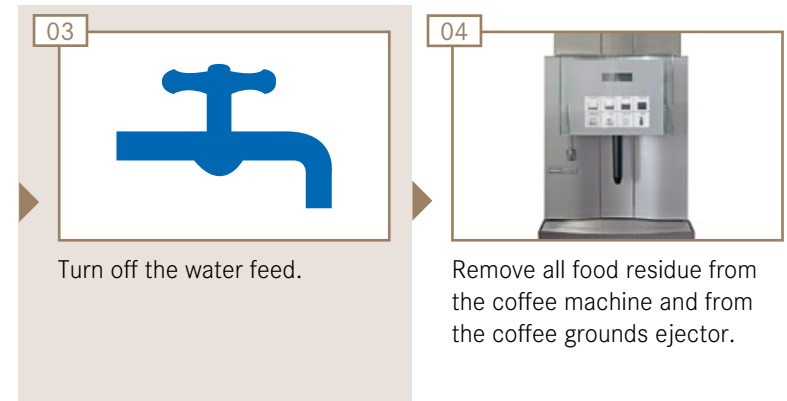
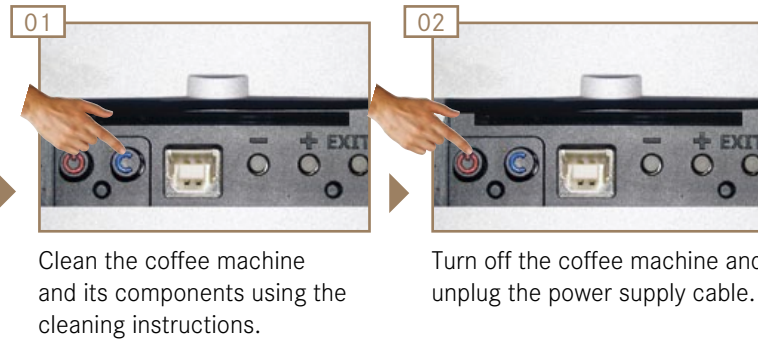
Shut down and disposal

Do you want to shut down your coffee machine for longer periods or dispose of it? Contact our service department. We recycle our coffee machines at a rate of nearly 100%, in order to protect the environment and resources.

Decommissioning



If you plan to take your coffee machine out of service for a longer period of time, take advantage of our service.



Shut-down for longer periods and storage

NOTICE

Risk of damage to the machine!
Contact your FRANKE service team for proper storage.
Observe the storage conditions and drain your coffee machines.
Storage temperatures: -10 °C to +50 °C
Humidity: max. 80%
If you plan to start using your machine again later, taking advantage of our service is essential.
The coffee machines must be maintained, installed and cleaned prior to drink preparation.
Proper functioning of the coffee machine cannot be ensured otherwise.

Disposal

Disposing of consumable materials

Observe local disposal regulations when disposing of consumable materials, waste and detergents..

Disposing of the coffee machine

You can return your coffee machine directly to your retailer at no charge. We will take care of the rest for you. For environmental protection reasons, we ask you not to dispose of the machine yourself.

Troubleshooting

If a problem occurs, your Spectra X-XL will give you instructions. Events and information are shown on the display. Should you be unable to resolve a problem despite all best efforts, please contact our service department.

Help with Machine Errors

Event no.	Display message	Solution
E003	Communication LP	Restart machine. If the error continues: contact Service.
E008	Internal CAN	Restart machine. If the error continues: contact Service.
E014, 015, 018, 019, 027, 028	Temperature sensor	Restart machine. If the error continues: contact Service.
E016	Temp. difference	Restart machine. If the error continues: contact Service.
E017, 021, 029	Over temperature	Restart machine. If the error continues: contact Service.
E022 to 024	Heater timeout	Restart machine. If the error continues: contact Service.
E030	Coffee post-heating	Status message. No action necessary.
E040 to 043	Motor timeout	Restart machine. If the error continues: contact Service.
E050 to 057	Checking card	Remove card. Checking card (correct card?). Try again.
E058 to 061	Writing card	Remove card. Checking card (clean it if necessary). Try again.
E090	Maint. required	Contact Service for maintenance.
E099	Water filter	Contact Service to replace water filter.
E110, 111	Flowmeter error	If the error continues for a prolonged period: restart machine, contact Service if necessary.
E121	Add ground coffee	Fill ground coffee container
E140	Calibrate store	Contact Service.
E141	Frequency store	Contact Service.
E160	Battery low	Contact Service.
E200 to 203	Communication CS	Only with accounting systems. Restart machine. If the error continues: contact Service.
E210, 211	Accounting CAN	Only with accounting systems. Restart machine. If the error continues: contact Service.
E142	Add cleaner	Connect new tank with detergent.

Certifications

Declaration of conformity



FRANKE Kaffeemaschinen AG in Aarburg, Switzerland, certifies that the Spectra X-XL coffee machine and its optional add-on units comply with the following standards.

The Spectra X-XL coffee machine checked for compliance with the following standards:
EN 60335-1:2002/AC2010+A11:2004+A1:2004+A12:2006+A2+A13:2008+A14:2010, EN 60335-2-15:2002/A2:2008, EN 60335-2-64:00 + A1:02, EN 60335-2-75:2004/A12:2010

Other standards that were applied:

EN 55014-1:06+A1:09, EN 50366:03+A1:06, EN 62233:08, EN 61000-3-2:06+A1:09+A2:09, EN 61000-3-3:08, EN 55014-2:97+A1:01+A2:08, EN 61000-6-1:07

The inspection was performed in accordance with the following directives:
2004/108/EC (EMC), 2006/42/EC (MD), 2004/1935/EC



Franke Kaffeemaschinen AG
Franke-Strasse 9
4663 Aarburg
Tel. +41 (0) 62 787 31 31
www.franke.com



Your distribution partner:

Issued 06.2011 / order number: 1H 328 131 / Revision 0



COFFEE
SYSTEMS